



SGS, LLC Dura-build homes utilizes Structural Insulated Panels (SIPS), when applicable, to provide fast track production that is cost effective, energy efficient and are both globally resilient and sustainable. The systems are utilized in both the commercial and residential market sectors.

<https://youtu.be/XgdcBOWPYZc>



Why build with SPT MAG – SIP?

Benefits for builders:

- Speed of construction
- Fewer framers
- Less building construction equipment
- Less job waste
- Less theft
- Rigid frame
- Competitive cost
- You can build all year round
- Increased referrals

Benefits for buyers:

- Extremely strong structure
- Precise building costs
- More space
- Lower energy bills
- Improved comfort
- Freeze proof
- Indoor air quality
- GREEN building product
- Quicker

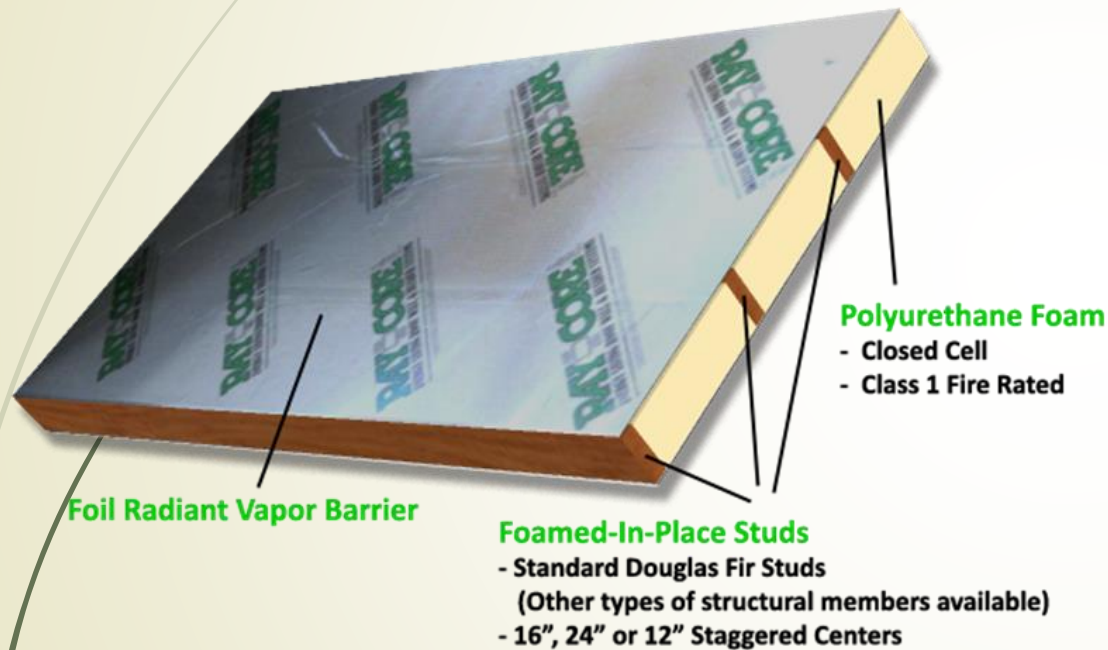


Qualities of SPT MAG - SIP

- High wind velocity construction
- Sustainable design technology
- Easy installation construction
- Fast track erection
- Multiple finishes
- Thermally efficient
- Cost effectiveness

"We now have the ability to build environmentally friendly cities overnight that are energy efficient, structurally sound aesthetically pleasing and cost effective".

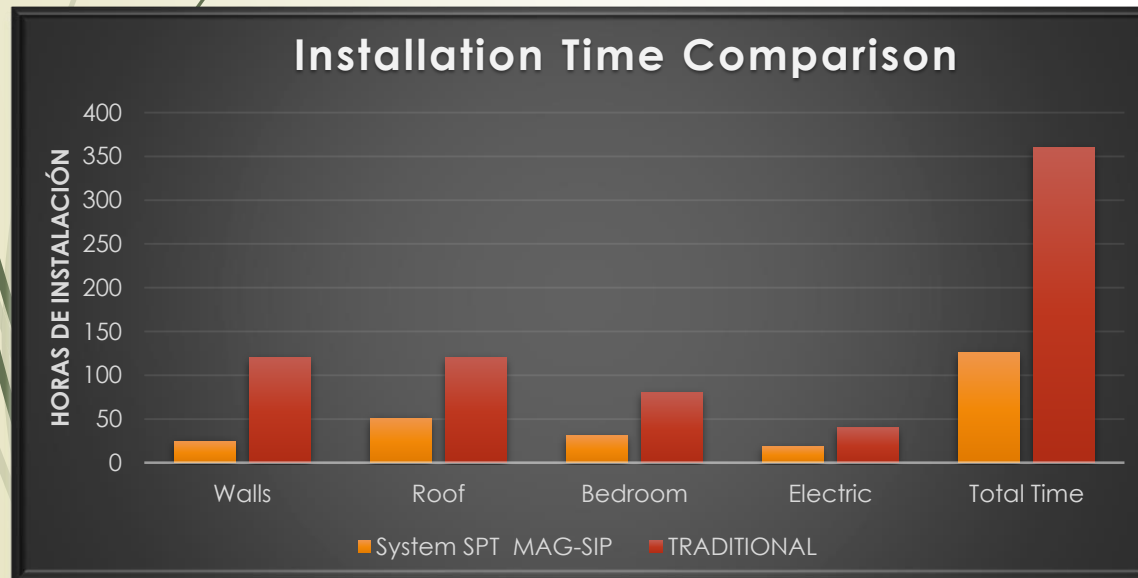
How is SIP made?



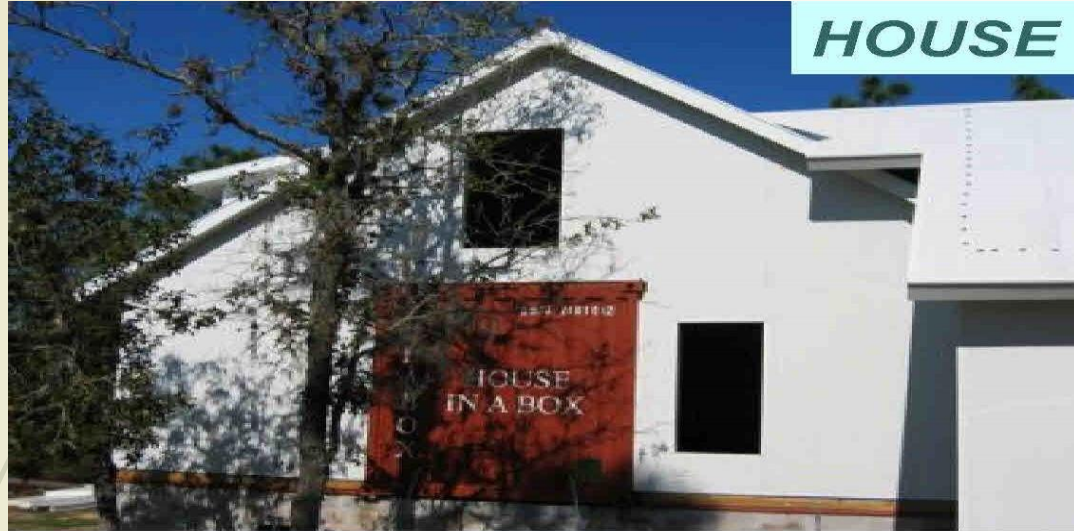
- ▶ Panels begin life in the factory at the standard dimensions. The high density PUR foam is injected directly between the MgO skins thus creating an extremely strong SIP with unique properties.
- ▶ CAD drawings of the structure to be built are converted to shop drawings, which are then plugged directly into computer numerical control (CNC) fabrication machines or are used to measure and cut the panels by hand.
- ▶ Special channels (chases) are cut into the foam to allow for the electrical wiring, and the insulation core is recessed around the edges to accept the connection splines or dimensional lumber used during construction.

Are SPT MAG-SIP's cost effective ?

- Building with SPT MAG-SIPs offers cost advantages to the builder in terms of speed of construction and reduced labor requirements. Panels are pre-manufactured to exact specifications so they arrive ready to install and come together quickly.
- The SIP systems allow for local labor forces to be easily trained creating jobs that do not require skilled labor. In combination to actual construction, these systems can also create jobs for the local population by participating in adding value manufacturing in the area of the actual developments.



HOUSE IN A BOX



Day 1 morning

Fast Track Construction

**Day 1 evening
using just 4 men**



Day 2 evening

Exterior finished to specification



MULTIPLE DESIGN STYLES



COMMERCIAL OFFICE BUILDINGS

